

# The Public Health Camp - Building an Academic-to-Practice Pipeline at Public Health – Seattle & King County

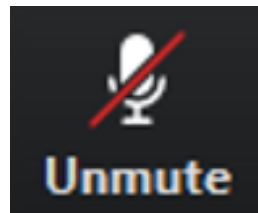


AHD Webinar  
April 4, 2024

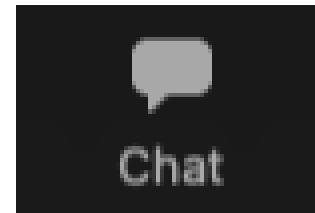
*This webinar is made possible through funding from the Centers for Disease Control and Prevention under Cooperative Agreement Number NU38OT000311. The content of this webinar is solely the responsibility of the presenters and does not necessarily represent the official views of the sponsor.*



# Welcome to Our Webinar!



All participants are muted.



Please use the Chat box and "Raise Hand" button to ask questions and share comments.



This webinar is being recorded.



# Council on Linkages Between Academia and Public Health Practice



Council of Public Health Nursing Organizations



The background features a light blue gradient on the left and top, transitioning to white on the right. A dark blue geometric shape, resembling a large arrow pointing right, is positioned in the lower-left quadrant. In the bottom-right corner, there are several overlapping horizontal bars in light blue and orange.

**What is an AHD  
Partnership?**

# An AHD Partnership...



- ┆ Joins a health department and an academic institution
- ┆ Institutionalizes collaboration
- ┆ Enhances public health education and training, research, and service



# What Does an AHD Partnership Look Like?

- **Academia and public health practice working together**
- Written partnership agreement
- Collaborative public health education or training
- Joint research projects
- Shared provision of public health services
- Shared personnel or other resources



# Why Create an AHD Partnership?

- Enhance capacity to address community health needs
- Better prepare students for public health practice careers
- Support recruitment of qualified professionals
- Facilitate lifelong learning
- Build and use practice-based evidence
- Maximize use of and enhance competitiveness for resources
- Meet accreditation standards
- **Improve public health system and community health**



# AHD Learning Community



# Helping AHD Partnerships Grow

Academic Health Department Learning Community – [www.phf.org/AHDLC](http://www.phf.org/AHDLC)

- National community of practitioners, educators, and researchers exploring and learning about AHD partnerships
- >1,500 members

## Variety of Activities:

- Examples and stories of AHD partnerships
- Webinars highlighting AHD partnerships
- Partnership agreements
- Listserv
- Technical assistance



The logo features a dark blue trapezoidal shape on the left containing the text. To its right is a light blue trapezoidal shape pointing right. In the bottom right corner, there are two overlapping horizontal bars: a light blue one on top and an orange one on the bottom.

# Public Health – Seattle & King County

# THE PUBLIC HEALTH CAMP

Building an Academic-to-Practice Pipeline at Public Health - Seattle & King County (PHSKC)



Shayla Holcomb  
Greg Wilson  
Betty Bekemeier  
Charishlyn Weintraub

Public Health  
Seattle & King County 

## Education Engagement Strategy (EES) Troupe Initiatives Fostering Joy, Confidence, and Engagement Opportunities

---

By integrating initiatives, the EES Troupe has created a vibrant and supportive environment that brings joy, builds confidence, and provides engaging opportunities for all stakeholders involved

- Internal Collaborations and External Partnerships
- Equity & Social Justice lens - Fostering a Sense of Purpose and Inclusivity
- Science, technology, Engineering, Art, Mathematics (STEAM) Workforce Development Focus
- Public Health Camp – “The Human Experience”
- Partnerships with HR for Workforce Development & Advancement
- Special Celebrations and Recognition Activities
- Virtual Engagement Platforms
- Communications to Empower Leaders for Tomorrow





**Public Health – Seattle & King County and University of Washington**  
*Memorandum of Agreement – Academic Health Department*

This Agreement is made and entered into between Public Health – Seattle & King County “PHSKC” and the University of Washington “UW”, collectively “the Parties” for the purpose of identifying shared academic goals and focal areas and establishing terms and conditions of the collaboration. Such collaboration shall be referred to as the Academic Health Department. It is not the intent of the parties to create a separate legal entity through this collaborative agreement.

**I. BACKGROUND:** The Parties have a longstanding and fruitful relationship, including provision of training opportunities for UW students at PHSKC, collaboration across a variety of program areas, and joint faculty appointments. However, the relationship and potential benefits to each institution and the community suffer from a lack of resources to provide ongoing optimal integration, identify and promote areas of collaboration and training opportunities that address current community needs and opportunities, and to systematically develop and disseminate a body of knowledge based on the results of collaborative work.

This Agreement formalizes the relationship and collaborative work between PHSKC and UW to form an Academic Health Department that provides mutual benefits in teaching, research, and service and associated community benefits. The Agreement allows academia to better inform the practice of public health, and public health to inform the academic program and future workforce and is based on established models of academic health department collaborations (see References).

**II. Goals:**

Specific goals of this Academic Health Department include:

1. Advance public health practice, programs and policies at PHSKC to better serve the residents of King County.
2. Maximize training opportunities for students that advance public health priorities.
3. Assure meaningful linkages and successful collaborations between PHSKC staff and UW faculty (including student mentors) that fill scholarly academic and public health practice resource needs.
4. Generate research and evaluation evidence that advances evidence-based practices and the assurance of an effective public health system.



## Jenna van Draanen, Ph.D. MPH

Assistant Professor

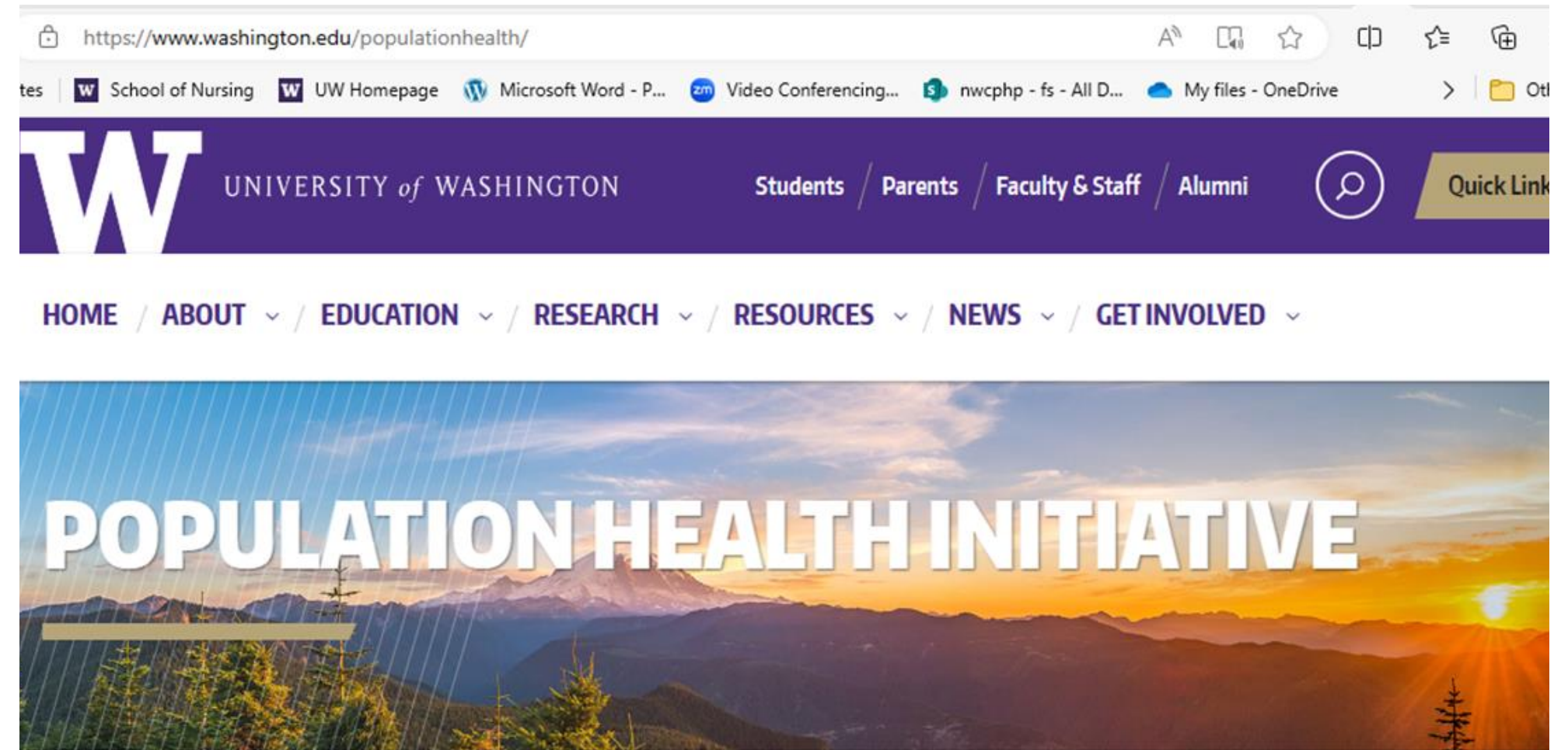
Department of Child, Family, and Population Health

Nursing, School of Nursing

Department of Health Systems and Population Health

Nursing, School of Nursing

<https://www.washington.edu/populationhealth/>



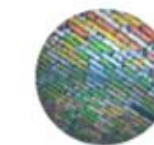
Home > Population Health

## Healthy people, healthy planet

**Healthier communities make healthier people.** The University of Washington is at the forefront of addressing the interconnected factors that influence how long and how well we live, from climate change and poverty to systemic inequities and access to medical care. In partnership with community organizations, the UW transforms research into concrete actions that improve and save lives across the country — and around the world.

## What is population health?

## Latest news



**[Initiative invites grant applications that seek to apply AI to population health challenges](#)**

[March 26, 2024](#)



**[Winter 2022 pilot grant awardees report their final project outcomes](#)**

[March 12, 2024](#)



**[First-year students explore communities, earn recognitions for](#)**



# THE PUBLIC HEALTH CAMP 2023

The Human Experience  
& the power of YOU



Public Health Camp participants pictured with Seattle City Mayor, Bruce Harrell (center left) and Director of Public Health Seattle & King County, Dr. Faisal Khan (center right)



# OVERVIEW



- 1 Vision & Goals
- 2 Our team & partners
- 3 Planning & Execution
- 4 Reflections & Evaluation
- 5 Moving Forward





# VISION & GOALS



**PHSKC's Education Engagement Strategy Troupe created this pilot program for local youth 16 and older to help promote PH careers, to grow a Public Health Ambassador community, and to support youth within King County.**

## **Goals:**

- **Provide youth often furthest from opportunity with access to public health careers and help open pathways to professions**
- **Highlight the diversity of jobs within PHSKC**
- **Humanize the work, inspire with passion**
- **Meet people where they are**

**2023 pilot funded by: [Tier 1 grant](#)**  
**W** POPULATION HEALTH INITIATIVE  
UNIVERSITY of WASHINGTON

# OUR 2023 TEAM



**Shayla Holcomb**  
*Nurse Manager*



**Greg Wilson**  
*EH PM III*



**Mariana Cortes Espinosa**  
*Intern*



**Kelly Poole**  
*Intern*



**Debbie Baker**  
*HR Analyst*



**Nori de la Pena**  
*APDE/CDIP PPM II*



**Ekk Sisavatdy**  
*OECP PPM IV*



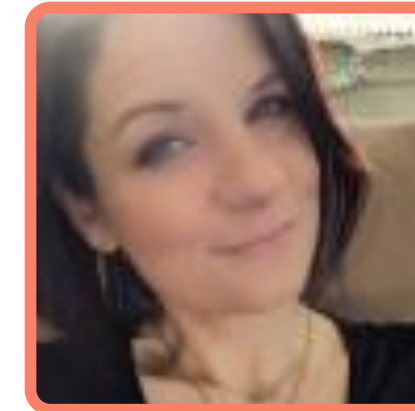
**Joie McCracken**  
*APDE/CDIP PPM IV*



**Amy Curtis**  
*Nurse Recruiter*



**Dorene Hersh**  
*Chief Nurse Officer*



**Christina Riley**  
*Prevention PPM II*



**Robin Laurence**  
*Infection Prevention & Safety*



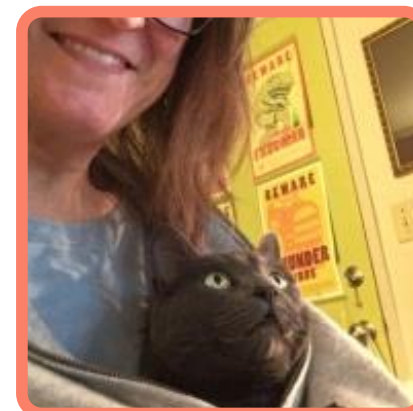
**Marissa Jauregui**  
*APDE/CDIP PPM II*



**Mollie Killion**  
*Intern*



**Sarah Wilhelm**  
*Strategic Advisor*



**Katy Ellis**  
*Administrator I*



**Chris Skilton**  
*volunteer*



**Maddie Poole**  
*volunteer*

**W** POPULATION HEALTH INITIATIVE  
UNIVERSITY *of* WASHINGTON

HEALTH SYSTEMS AND  
POPULATION HEALTH  
SCHOOL OF PUBLIC HEALTH  
UNIVERSITY *of* WASHINGTON

 King County  
**METRO**

 King County  
Best Starts for  
**KIDS**

**WABS**  
WASHINGTON ALLIANCE  
FOR BETTER SCHOOLS

**W** SCHOOL OF NURSING  
UNIVERSITY *of* WASHINGTON

# 2023 TIMELINE



Planning team initiated

March 2023

Youth interest form opens & recruitment begins

March – July 2023

Trained PH Camp Hosts

09.26.23

Intern transition

September 2023

Launch planning for 2024

12.01.23

January 2023

Shayla & DNP student, Jessie Kelley drafted concept & Tier 1 grant application

April 2023

- First Planning Meeting
- Tier 1 grant application submitted

May 2023

Launch of subcommittees to execute planning

June 2023

Career Connect WA program builder grant submitted

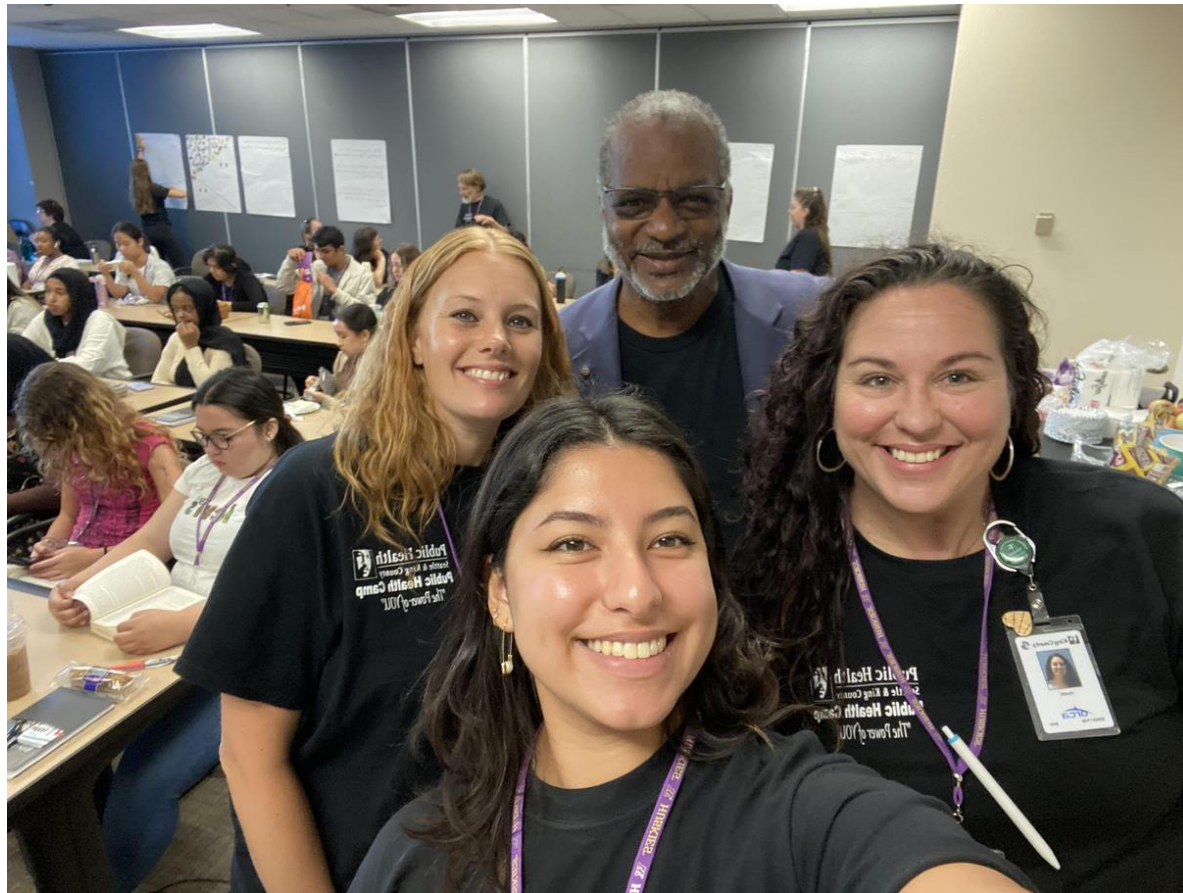
August 2-4, 2023

Launched pilot Public Health Camp

Oct. 2023 – Feb. 2024

Complete Program Evaluation

# PLANNING & EXECUTION



Video montage of Day 1 :

<https://www.screencast.com/t/LnSxICED0Pme>

# PLANNING & EXECUTION



# AMBASSADOR REFLECTIONS



## HOW PUBLIC HEALTH CAMP AMBASSADORS DESCRIBED THEIR TIME



AMBASSADORS SPENT 3 DAYS IMMERSSED IN PUBLIC HEALTH STEAM EDUCATION & WORK SITE TOURS

## PUBLIC HEALTH CAMP 2023

PUBLIC HEALTH AMBASSADOR

THIS CERTIFICATE GOES TO

for participating in Public Health Camp 2023 hosted by Public Health - Seattle King County

FAISAL KHAN  
PHSKC Director

SHAYLA HOLCOMB  
Nurse Manager

GREG WILSON  
Program Manager

Public Health  
Seattle & King County 

Education Engagement  
Strategy Troupe

Public Health  
Seattle & King County 

# CO-CREATION

## Internship Experience and Beyond



**Mariana Cortes Espinosa**  
April 2023-Sept 2023

Fall 2024 began a Masters in Environmental Health Sciences at the University of Washington



**Kelly Poole**  
April 2023-Sept 2023

Fall 2024 began a Masters in Public Health at Oregon State University



**Charislyn Weintraub, BSN, RN-BC, CPH**  
(she/her)

**Sept 2023-March 2024**

Major, United States Army Nurse Corps  
Finishing a DNP-Population Health & System Leadership at University of Washington

Conducted program  
EVALUATION



# Background & Purpose

- > Critical Workforce Decline
- > Urgent Need for Diversity
- > Post-COVID-19 Challenges
- > Pre-existing Staffing Issues
- > Collaborative Solutions

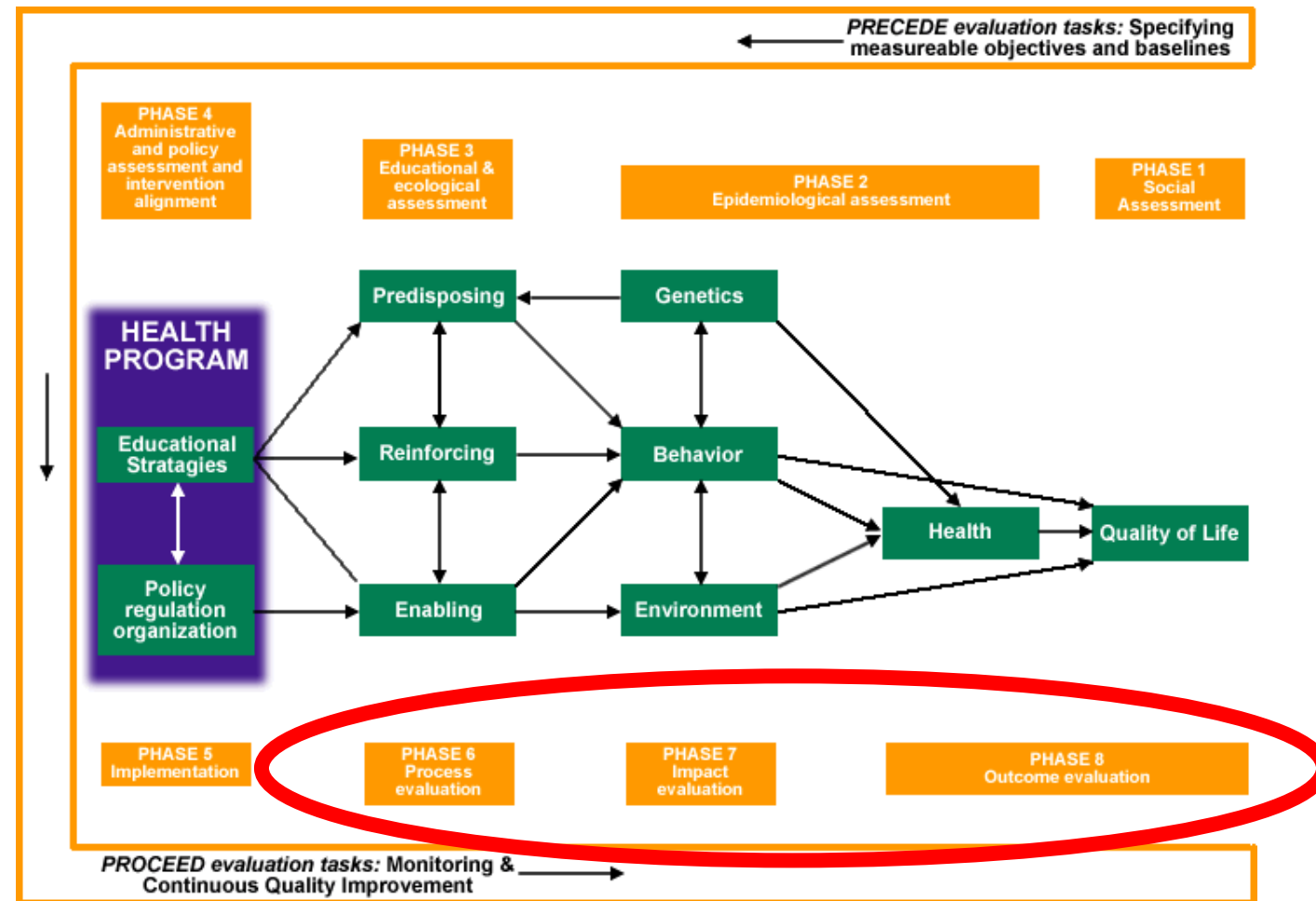


**Purpose of DNP Project was to evaluate the pilot PH Camp to guide its further development and pave the way for future growth**

# W

# Model Frameworks & Approach

## PRECEDE-PROCEED, CDC EVALUATION FRAMEWORK, & LANGUAGE JUSTICE

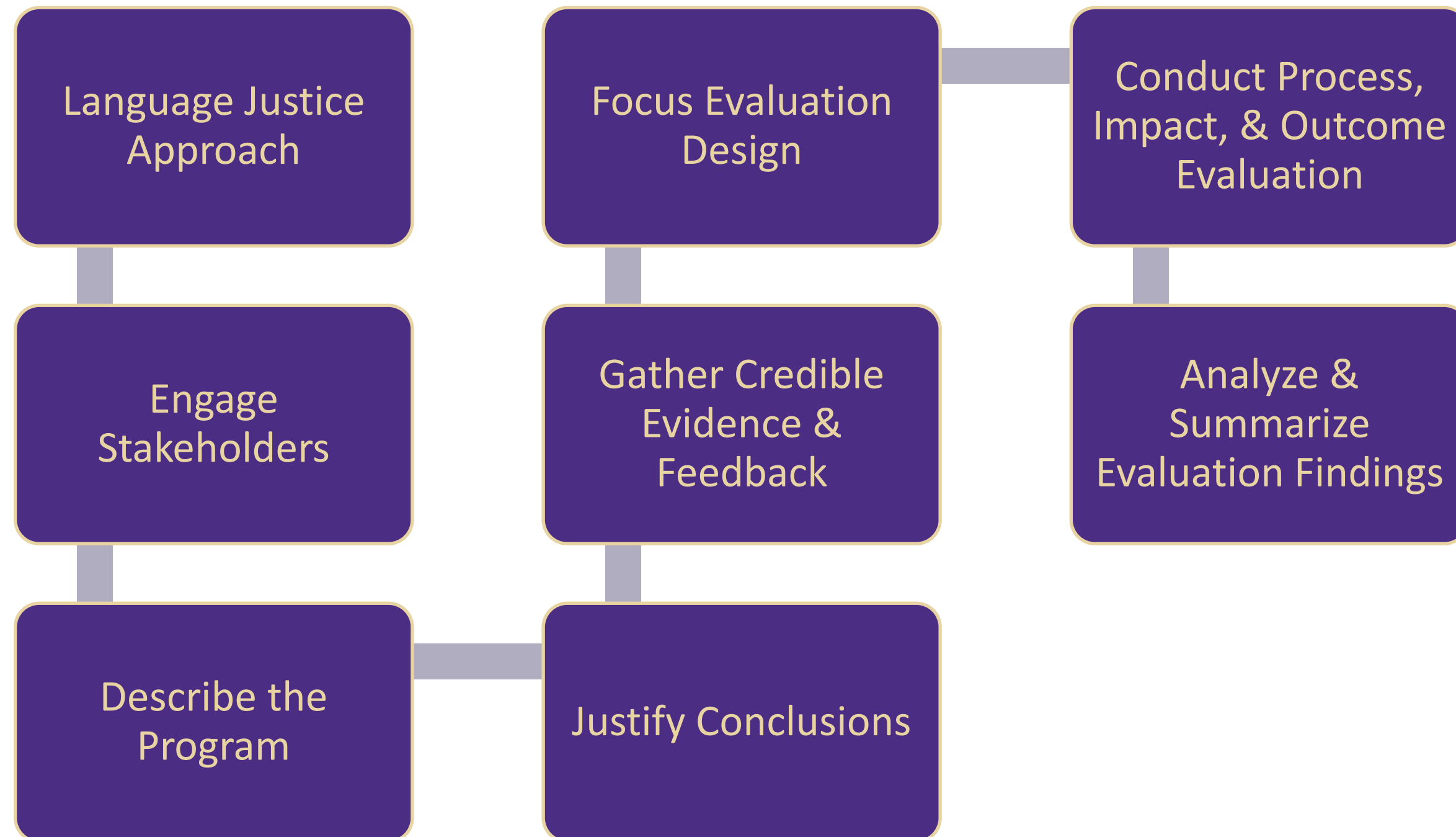


### Language Justice Approach:

- > Addresses oppressive language power dynamics.
- > Emphasizes language as a tool for transformative thinking.
- > Ensures equitable access to all voices, fostering inclusive dialogue.

W

# Implementation



# Evaluation Outcomes

*"Learning about not only very interesting professions but about specifically who these professions serve was very inspiring. This impacted me because now I want to aim to also serve people that are in more need than others may be."*

Ambassador (Student) Survey Highlights:	Staff Survey Highlights:
<p><b>Diverse Participation:</b> Varied reasons for signing up (career exploration, learning, networking, &amp; social)</p> <p><b>Effective Outreach:</b> promotion via friends, teachers, and targeted channels</p> <p><b>Positive Impact on Interest:</b> High levels of interest in public health</p> <p><b>Overall Satisfaction:</b> 100% reported being extremely or very satisfied, 96% likelihood of recommending the camp.</p> <p><b>Valuable Feedback:</b> Participants provided improvement suggestions for future camps</p>	<p><b>Success of PH Camp:</b> 87.5% strongly agree</p> <p><b>High Potential for Continuity:</b> 91.7% Strongly Agree</p> <p><b>High Engagement and Feedback from staff</b></p> <p><b>Diversity and Inclusion Success:</b> Engaged BIPOC students</p> <p><b>Impactful Personal Stories:</b> Sharing personal stories had a positive impact.</p>

PH Camp, in its planning, execution, and evaluation, aligns with *Language Justice* principles valuing all languages for inclusivity, integrating youth voices for empowerment, and establishing multilingual spaces to embrace every perspective, reinforcing inclusivity and justice.



# **Key Findings and Recommendations**

---

- **Collaborate with Regional Public Health Training Center (RPHTCs)**
- **Consider leadership development**
- **Tailor curriculum based on demographics & participant feedback**
- **Learn from successful pipelines**
- **Diversify sessions, enhance career exploration, and expand outreach**
- **Consider flexible session lengths & continuous evaluation**
- **Explore other frameworks/approaches for future evaluations**
- **Continue leveraging support from PH interns**
- **Continue reflective writing**



# Acknowledgements

---

***BE BOUNDLESS***



# MOVING FORWARD



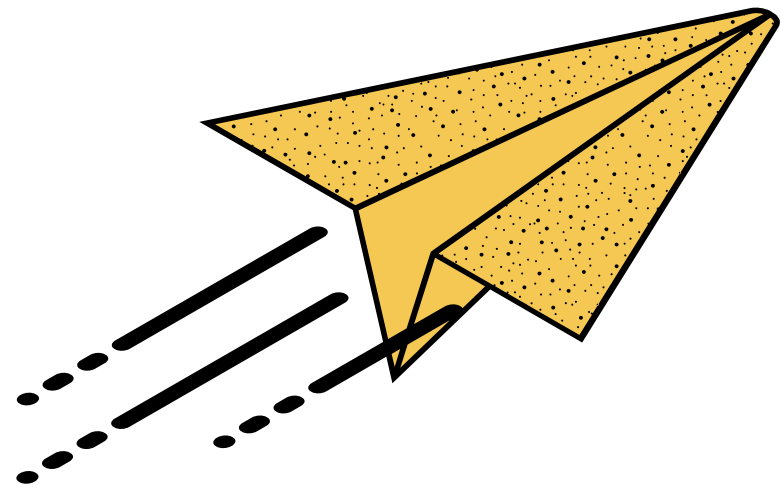
## Public Health Camp 2024: August 5-9, 2024

- CDC Public Health Infrastructure Grant (PHIG) activity
- Recruit for paid interns (April - October 2024)

## Public Health Youth Ambassador Program

- Development of an ambassador community
- Engagement & Events: CPR Training (free), Naloxone Training, volunteer and continued learning opportunities, youth advisory, etc.





# THANK YOU!

We make a GREAT public health team!



Public Health  
Seattle & King County 



SCHOOL OF NURSING  
UNIVERSITY of WASHINGTON



# AHD Partnership Resources

- Academic Health Department Learning Community: [www.phf.org/AHDLC](http://www.phf.org/AHDLC)
  - ▷ Peer community supporting public health practice/academic collaboration
- [AHD Webinars](#)
  - ▷ Webinars focused on AHD partnerships
- [AHD Resources and Tools](#)
  - ▷ Resources to support development, maintenance, and expansion of AHD partnerships
- Council on Linkages Update: [www.phf.org/councilupdate](http://www.phf.org/councilupdate)
  - ▷ Newsletter featuring the latest AHD partnership resources

Questions?

Contact Mayela Arana at [marana@phf.org](mailto:marana@phf.org).





# THANK YOU!

[www.phf.org/AHDLC](http://www.phf.org/AHDLC)

For more information or to join, contact:

Mayela Arana

[marana@phf.org](mailto:marana@phf.org)

